



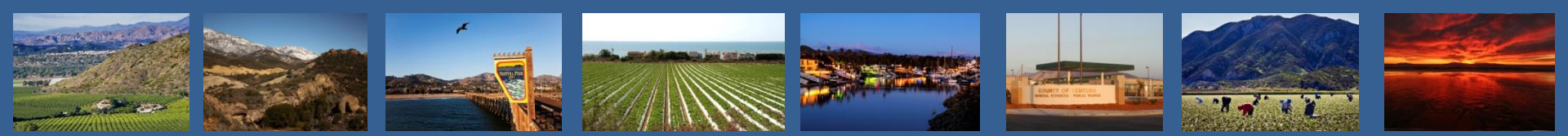
COUNTY OF VENTURA CALIFORNIA



Partnership for a Healthy Ventura County

March 7, 2019

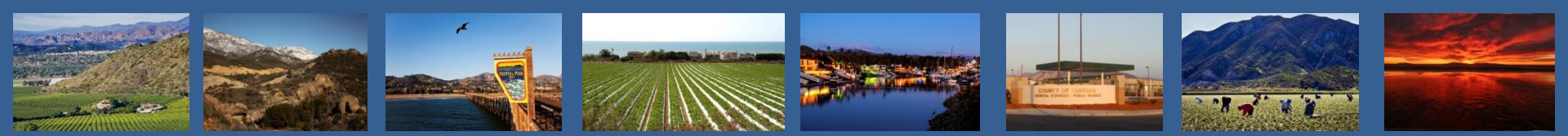
Ventura County | RMA - Planning Division



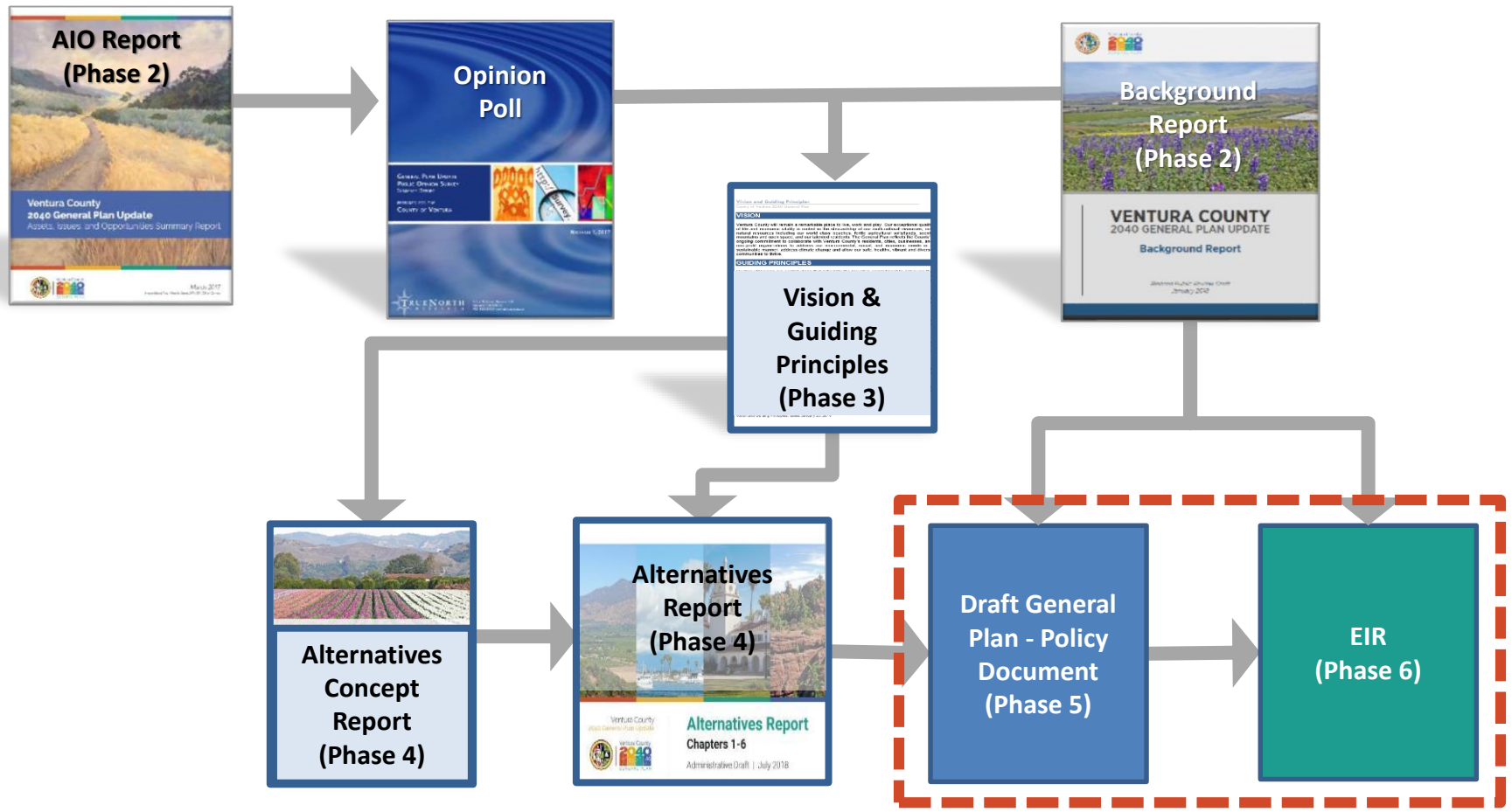
PROJECT PHASES AND MILESTONES

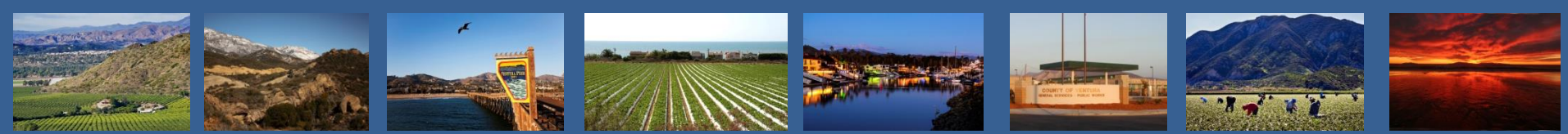


- No change in schedule for upcoming phases
- Completed the Alternatives Report pursuant to Board Direction on July 31, 2018 and November 6, 2018.



PROJECT REPORTS





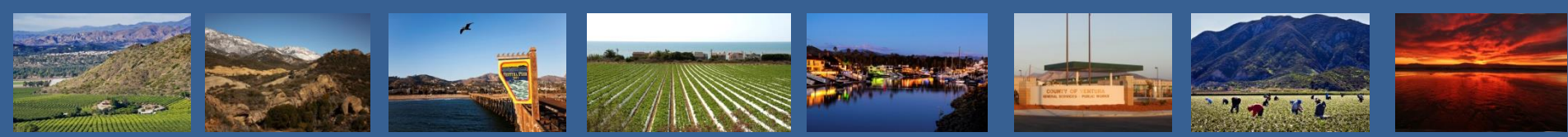
2040 General Plan, Structure & Content

Element-based Structure

- Introduction
- Land Use and Community Character
- Housing Element (October 2021)
- Circulation, Transportation and Mobility
- Public Facilities, Services and Infrastructure
- Conservation and Open Space
- Hazards and Safety
- Agriculture
- Economic Vitality
- Water Resources
- Area Plans
- Cross-cutting Themes
 - Climate Action Plan, Environmental Justice, Healthy Communities

Content

- Goals, policies and programs required by state law
- Land Use Diagram
- Identify and streamline goals, policies and programs that are redundant between the General Plan and Area Plans
- Identify and streamline goals, policies and programs requiring compliance with federal, state, and local legislation / regulations
- Staff were directed to explore Policy Topics identified by the Board of Supervisors for possible inclusion as new goals, policies or programs



2040 General Plan, Structure & Content

Cross-Cutting Themes

Element-based Structure

- Land Use and Community Character
- Housing Element (October 2021)
- Circulation, Transportation and Mobility
- Public Facilities, Services and Infrastructure
- Conservation and Open Space
- Hazards and Safety
- Agriculture
- Economic Vitality
- Water Resources



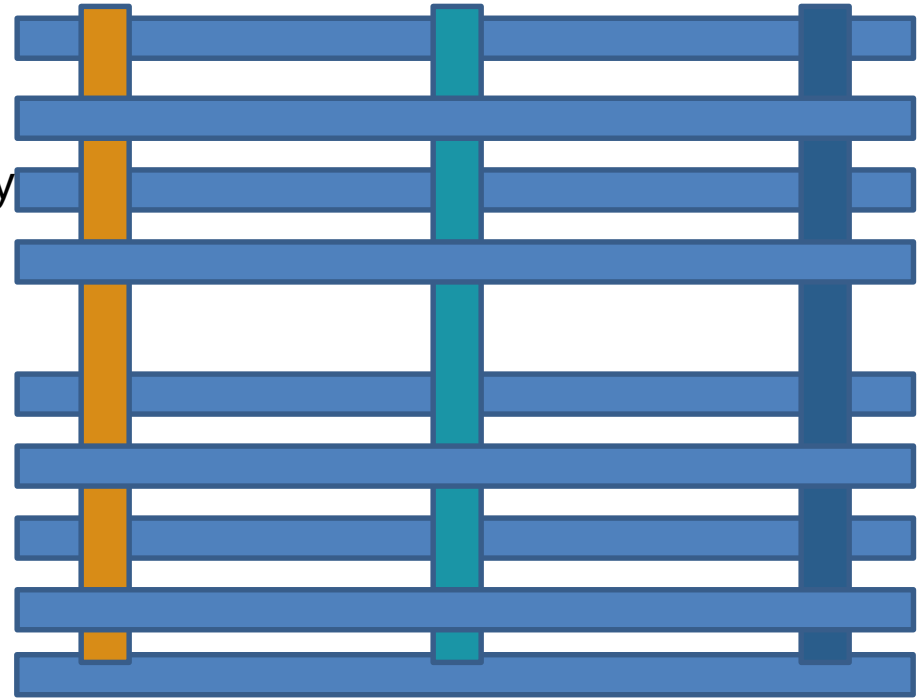
**Environmental
Justice**

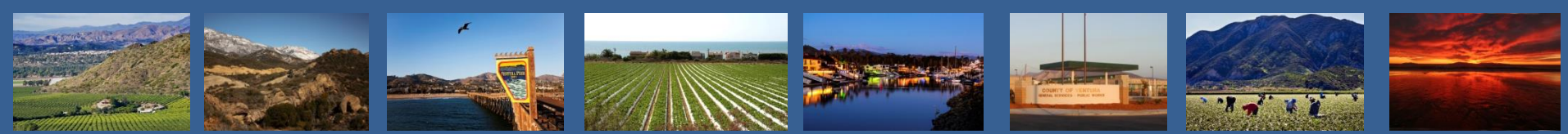


**Healthy
Communities**



**Climate Action
Plan**





2040 General Plan, Structure & Content

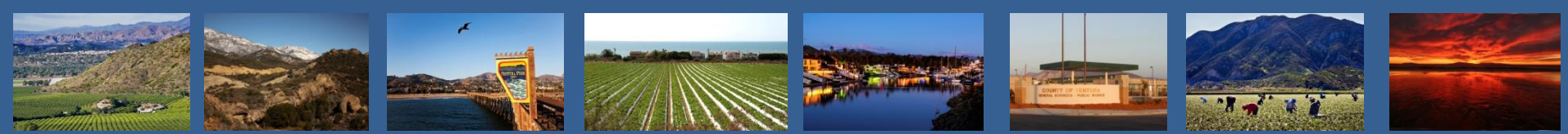
Element-based Structure

- Land Use and Community Character
- Housing Element (October 2021)
- Circulation, Transportation and Mobility
- Public Facilities, Services and Infrastructure
- Conservation and Open Space
- Hazards and Safety
- Agriculture
- Economic Vitality
- Water Resources

Healthy Communities Theme



The 2040 General Plan focuses on promoting healthy communities and connections between the built environment and public health. Healthy Communities provide for a quality and sustainable environment, adequate levels of economic and social development, health and social equity, social relationships that are supportive and respectful, and meets the basic needs of all, across the lifespan.



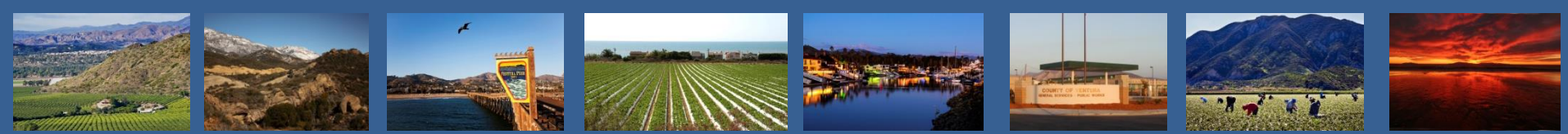
Policy Topics

Additional Policy Topics for Exploration

Input from the following:

- Community Workshops, Open Houses, Public-opinion Survey
- Assets, Issues, and Opportunities Summary Report
- Municipal Advisory Councils / Piru Neighborhood Council
- Agricultural Policy Advisory Committee
- Alternatives Concept Report

The following slides are topics we can explore during Plan development. These items were included in Chapter 9 and the staff report for this item.

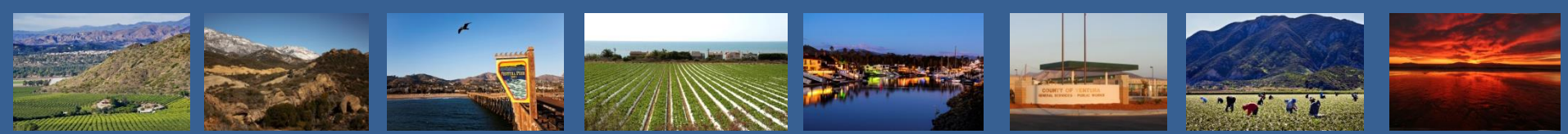


Policy Topics

Additional Policy Topics for Exploration

Land Use Element

- Promote green/net zero buildings
- Increase maximum residential building heights
- Allow higher density development on residential parcels
- Consider mixed-land use, where homes, shops, schools, and places of work are closer together, in specified locations of the County (*Saticoy and Piru Area Plans currently include mixed-land uses noted above*)
- Consider policies that allow for more flexible *Live/Work* spaces in specified locations of the County (*Saticoy and Piru Area Plans currently include live/work uses noted above*)
- Coordinate with cities and LAFCO to reduce/streamline existing challenges of coordination between the County, cities, and LAFCo for development projects.

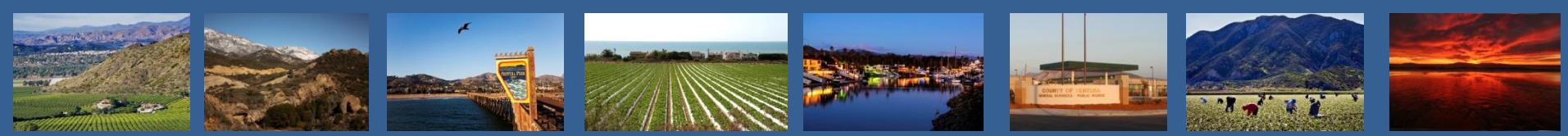


Policy Topics

Additional Policy Topics for Exploration

Circulation, Transportation, and Mobility Element

- Prepare for arrival of autonomous vehicles
- Develop Vehicle Miles Traveled policies
- Explore first/last mile public transit options
- Reduce impacts of freight and truck routes on residential areas
- Promote expanded transit options

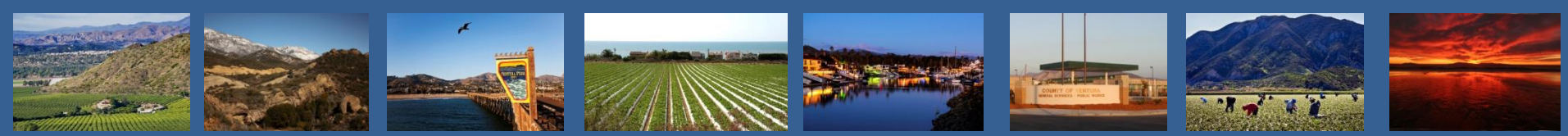


Policy Topics

Additional Policy Topics for Exploration

Public Facilities, Services, and Infrastructure Element

- Expand broadband (high-speed internet) access to unserved and underserved areas
- Plan for parks and green spaces within walking distance from homes and workplaces
- Plan for repair/replacement of aging infrastructure
- Plan for additional recreational, pedestrian and bicycle trails

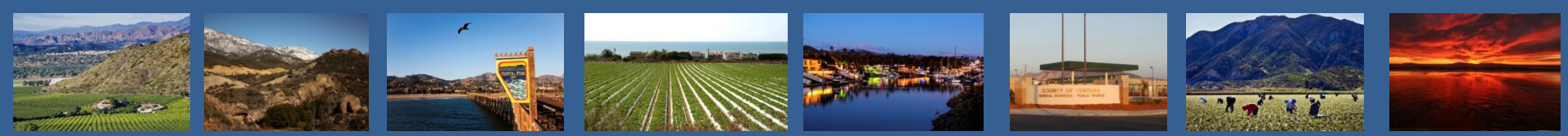


Policy Topics

Additional Policy Topics for Exploration

Hazards and Safety Element

- Incentivize projects which utilize zero emission technologies in goods movement and construction operations
- Promote reductions in mobile and stationary source emissions to improve air quality
- Consider policies for rebuilding in hazard-prone areas
- Explore the provision of additional emergency and fire protection services in rural/mountain areas
- Avoid the siting projects with significant emissions or risk adjacent to homes

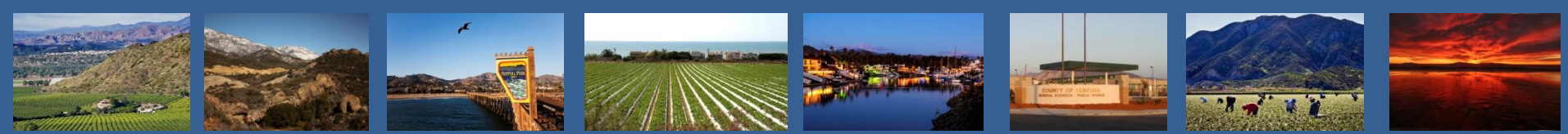


Policy Topics

Additional Policy Topics for Exploration

Water Element

- Promote countywide coordination/leadership for water management
- Explore additional sources of water (*excluding State water pursuant to Board of Supervisors direction at the April 17, 2018 Work Session*)
- Incentivize reduction in water use
- Encourage water conservation (e.g., reuse, dual plumbing for greywater, brine lines, stormwater capture and treatment)
- Consider Low Impact Development techniques
- Encourage use of reclaimed water
- Encourage use of in-stream water flow for groundwater recharge

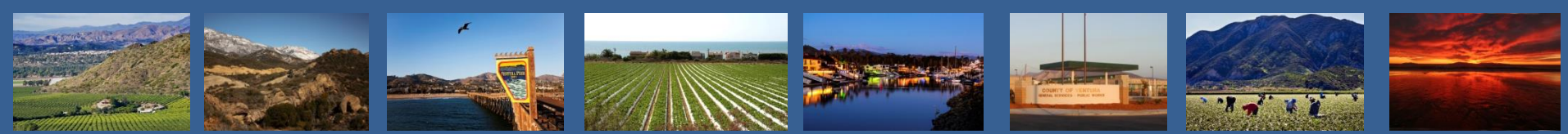


Policy Topics

Additional Policy Topics for Exploration

Housing Element

- Promote countywide coordination/leadership for affordable housing initiatives
- Explore policies that increase options for aging in place
- Increase the range of housing types available including tiny homes, modular housing options, co-housing, and multi-family residential housing

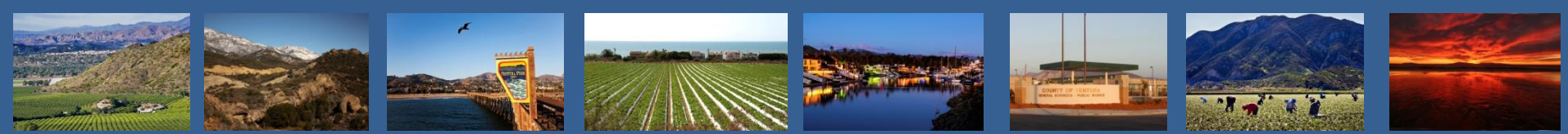


Policy Topics

Additional Policy Topics for Exploration

Agricultural Element – provided by the Agricultural Policy Advisory Committee

- Include commitment that land uses such as wildlife corridors, scenic resources zones, and public access trails will not conflict with agricultural uses on private lands
- Provide greater opportunities and incentives for growers and livestock producers to participate in Williamson Act programs
- Maintain water resources for agricultural production, both in quality and quantity, so as to prevent the loss of agriculture due to competition for water with urban and suburban development
- Allow the transfer of entitlements between parcels to accommodate agricultural facilities and farmworker housing and encourage larger parcels to remain in agricultural production

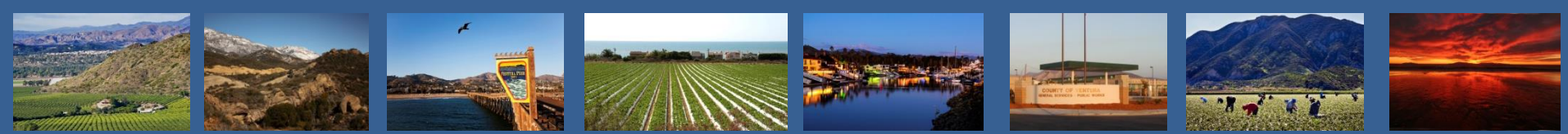


Policy Topics

Additional Policy Topics for Exploration

Agricultural Element (continued) – provided by the Agricultural Policy Advisory Committee

- Provide value-added marketing opportunities for agricultural commodities produced in Ventura County
- Consider alternative uses on agricultural lands adjacent to existing public schools, such as farmworker housing
- Increase opportunities for agricultural processing, pre-processing and packing facilities

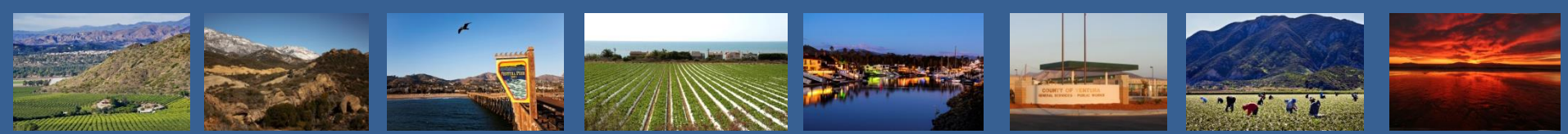


Policy Topics

Additional Policy Topics for Exploration

Agricultural Element (continued)

- Expand agricultural practices to support economic vitality
- Maintain available water supply to maintain agricultural uses
- Explore adaptation policies for agricultural practices to address climate change
- Increase organic farming
- Incentivize soil and land conservation

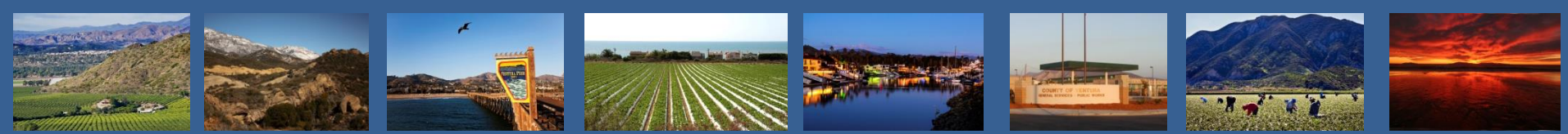


Policy Topics

Additional Policy Topics for Exploration

Economic Vitality Element

- Promote countywide coordination/leadership for economic development
- Streamline permit process
- Explore policies that facilitate development of strategic industry clusters in the unincorporated County
- Explore options and opportunities for commercial air service and aviation-related spin-off for local business support services
- Identify policies that encourage economic spin-off opportunities and local business support services for Naval Base Ventura County and the Port of Hueneme
- Encourage *micro* business development such as the cottage food industry, micro-kitchens and other emerging economic opportunities

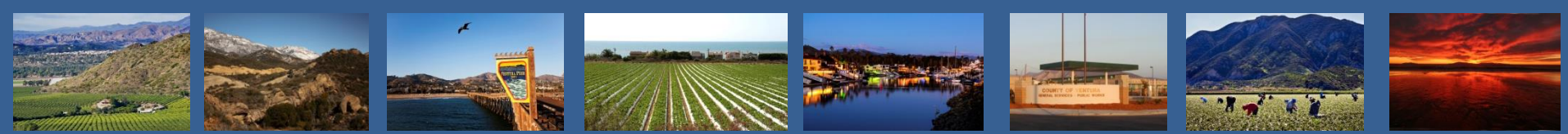


Policy Topics

Additional Policy Topics Added by the Board of Supervisors

Various Elements

- Address military compatibility (*required by state law*)
- Incorporate Right to Farm Ordinance
- Incorporate Economic Vitality Strategic Plan
- Do not explore topics that conflict with SOAR
- Identify a wish list of underserved areas that do not currently have parks
- Have both wildlife corridors and a robust agricultural economy
- For Water Element, direction does not prohibit cities from pursuing state water and allows conveyance of state water across unincorporated areas
- For Housing Element, address farmworker, senior and ADU's to the level feasible at this time
- For the Economic Vitality Element, address solar and renewable energy siting



Next Steps

Based on direction from the Board of Supervisors:

- Winter 2018 / Spring 2019: Prepare draft of the General Plan
- Spring 2019: Community workshops, focus groups and advisory body meetings
- Spring 2019: Planning Commission review
- Spring / Summer 2019: Board of Supervisor review



COUNTY OF VENTURA CALIFORNIA



QUESTIONS?

